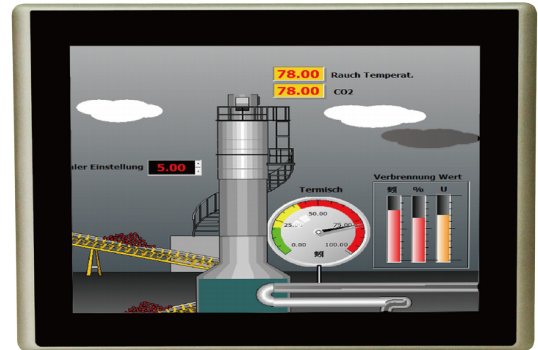


SoftPLC Web Studio HMIs

SSH Series PC Touch Panel Systems

03/02/18

Features
Variety of LCD screen sizes
Bright display, suitable for sunlight (<i>high-bright option for some models</i>)
Resistive touchscreen (<i>option for capacitive w/ anti-scratch surface</i>)
Industrial Panel PC, Fanless and Low Power
Options to add/increase communication ports, memory, storage
Wide range DC 9-36VDC power input
Choice of Operating System



SSHC- and SSHI- 5x / 7x / 10x



SSHC- and SSHI- 12x / 15x / 17x / 19X / 21x

Standard models are equipped with user selected operating system, a 16/32GB SSD, and a user selected Web Studio runtime softkey license (*optional USB hardkey can be ordered separately*). For options, such as Capacitive Touchscreen, more memory/storage, etc. contact SoftPLC Corp for ordering/pricing information.

ORDERING INFORMATION							
Specify model by Catalog Numer: SSH <CPU>.<Screen Size><O/S><Runtime Capacity>							
Example: SSHC-10XLP is a 10.1" Celeron w/ Windows Embedded O/S with 300 tags capacity Web Studio Runtime							
SCREEN SIZE							
5	7	10	12	15	17	19	21
CPU			O/S			RUNTIME CAPACITY	
A	Arm Cortex A8, 1 GHz		C	Windows Embedded Compact		LT	150 tags
C	Intel Celeron N2930, 1.83GHz		X	Windows Embedded Standard		LP	300 tags
I	Intel 4 th Gen Core i3		W	Windows 7 Professional		15	1500 tags
						4K	4000 tags

SPECIFICATIONS FOR SSHA-x UNITS				
Model	SSHA-5	SSHA-7	SSHA-10	SSHA-12
Display				
TFT/LCD Display Size	5.6"	7"	10.1"	12.1"
Max. Resolution	640 x 480	800 x 480	1024 x 600	800 x 600
Max. Colors	262K			16.2M
Luminance (cd/m²)	350	350	250	450
Viewing Angle (degrees)	140/120	140/110	140/120	160/140
Contrast Ratio (H/V)	500:1	400:1	500:1	800:1
Backlight Lifetime	20K hours	40K hours	15K hours	50K hours
Resistive Touchscreen	Type ADC, Light Transmission over 80%			
Capacitive Touchscreen	N/A	<i>(option)</i> Type USB, Light Transmission over 90%		
Mechanical				
Construction	Plastic Front/ Rear Bezel			
Mounting	Panel, VESA 75 x 75		Panel, VESA 100 x 100	
Dimensions WxHxD mm / in	204 x 150 x 42.5 mm 8.03 x 5.91 x 1.67 in		285 x 189 x 49.6 mm 11.22 x 7.44 x 1.95 in	319 x 245 x 51 mm 12.56 x 9.65 x 2.01 in
Cutout Size WxH mm / in	192 x 138 mm 7.56 x 5.43 in		272 x 176 mm 10.71 x 6.93 in	303 x 229 mm 11.93 x 9.02 in
Max Power Consumption	9W	8W	9W	11W
Power Input	9~36 V DC, 3 pin terminal block; 2 pin power on/off switch; power supply included			
System				
CPU	1GHz ARM Cortex A8			
System Memory	512MB DDR3 DRAM			
External I/O Ports	1 x 10/100 Ethernet RJ-45; 2 x USB 2.0 type A, 1 x Audio Out, 1 x DB9 Serial Port RS-232/485/422			
Storage	Onboard 512MB NAND Flash <i>(expandable to up to 1GB)</i>			
Expansion Slots	Mini PCIe full size, Internal SIM card and MicroSD			
OS Support	Windows Embedded Compact 7 <i>(option for Linux 3.2 QT)</i>			
Environmental				
Temperature	Operating: 0-50°C (32°F-122°F) Storage: -20-60°C (-4°F-140°F)			
Relative Humidity	10 to 90% @ 40°C, non-condensing			
Certifications	UL , CE / FCC Class A, RoHS compliant			



SSHA-5x, 7x, 10x



SSHA-12x

SPECIFICATIONS FOR SSHC-x UNITS				
Model	SSHC-7	SSHC-10	SSHC-12	SSHC-15
Display				
TFT/LCD Display Size	7"	10.1"	12.1"	15"
Max. Resolution	800 x 480	1280 x 800	800 x 600	1024 x 768
Max. Colors	262K	16.2M (*16.7M)	16.2M	16.7M (*16.2M)
Luminance (cd/m²)	350 (*1000)		450 (*1000)	
Viewing Angle (degrees)	140/110 (*140/130)	160/160 (*170/170)	160/140	160/140 (*160/145)
Contrast Ratio	400:1	800:1 (*600:1)		
Backlight Lifetime Hours	40K (*50K)	40K (*25K)	50K	30K
Resistive Touchscreen	Type USB, Light Transmission over 80%			
Capacitive Touchscreen	(option) Type USB, Light Transmission over 90%			
Mechanical				
Construction	Aluminium front bezel and chassis, NEMA 4/4X IP66 Front Panel			
Mounting	Panel, VESA 75x75	Panel, VESA 100 x 100		
Dimensions WxHxD mm / in	202 x 149 x 40 mm 7.95 x 5.87 x 1.57 in	285 x 189 x 48.9 mm 11.22 x 7.44 x 1.93 in	319 x 245 x 51.7 mm 12.56 x 9.65 x 2.04 in	410 x 310 x 54.6 mm 16.14 x 12.2 x 2.15 in
Cutout Size WxH mm / in	192 x 138 mm 7.56 x 5.43 in	272 x 176 mm 10.71 x 6.93 in	303 x 229 mm 11.93 x 9.02 in	392 x 292 mm 15.43 x 11.5 in
Net Weight	1.2 Kg (*1.1Kg)	1.9 Kg (*2 Kg)	2.8 Kg (*2.9 Kg)	4.4 Kg (*4.5 Kg)
Power Consumption	14.1W (*11W)	14.6 W (*19.2W)	19.5W (*22.1W)	17.8W (*28.7W)
Power Input	9~36 V DC, 5 A, 3 pin terminal block; 2 pin power on/off; power supply included			
System				
CPU	Intel Celeron N2930 1.83GHz Quad Core Processor			
System Memory	4GB DDR RAM (up to 8GB)			
External I/O Ports	2 x GB Ethernet RJ-45; 2 x USB 3.0 type A, USB4/5, 1 x Audio Out 2 x DB9 Serial Ports (COM1: RS-232/485/422, COM2: RS-232)			
Storage	16GB SSD (option for up to 64GB)			
Expansion Slots	SD card (up to 32GB), Internal Mini-PCIe full size			
OS Support	Windows Embedded Standard 7 (option for WinCE, Windows Professional)			
Environmental				
Temperature	Operating: 0-50°C (32°F-122°F); Storage: -20-60°C (-4°F-140°F)			
Relative Humidity	10 to 90% @ 40°C, non-condensing			
Certifications	CE / FCC Class A, RoHS compliant			

* High Bright Version (option)

SPECIFICATIONS FOR SSHC-x UNITS (cont'd)			
Model	SSHC-17	SSHC-19	SSHC-21
Display			
TFT/LCD Display Size	17"	19"	21.5"
Max. Resolution	1280 x 1024		1920 x 1080
Max. Colors	16.2M (*16.7M)	16.7M	
Luminance (cd/m ²)	350 (*1000)		250 (*1000)
Viewing Angle (degrees)	170/160		178/178
Contrast Ratio	1000:1		3000:1
Backlight Lifetime Hours	30K (*50K)	50K	30K
Resistive Touchscreen	Type USB, Light Transmission over 80%		
Capacitive Touchscreen	<i>(option)</i> Type USB, Light Transmission over 90%		
Mechanical			
Construction	Aluminium front bezel and chassis, NEMA 4/4X IP66 Front Panel		
Mounting	Panel, VESA 100 x 100		
Dimensions WxHxD mm / in	439 x 348 x 64.8 mm 17.28 x 13.7 x 2.55 in	468 x 380 x 64.8 mm 18.43 x 14.96 x 2.55 in	557 x 362 x 64.8 mm 21.93 x 14.25 x 2.55 in
Cutout Size WxH mm / in	422 x 331 mm 16.61 x 13.03 in	450 x 362 mm 17.72 x 14.25 in	539 x 344 mm 21.22 x 13.54 in
Net Weight	6Kg	5.9 Kg	7.5 Kg
Power Consumption	22.1W	29.5 W	26.6 W
Power Input	9~36 V DC, 5 A, 3 pin terminal block; 2 pin power on/off; power supply included		
System			
CPU	Intel Celeron N2930 1.83GHz Quad Core Processor		
System Memory	4GB DDR RAM (up to 8GB)		
External I/O Ports	2 x GB Ethernet RJ-45; 2 x USB 3.0 type A, USB4/5, 1 x Audio Out 2 x DB9 Serial Ports (COM1: RS-232/485/422, COM2: RS-232)		
Storage	16GB SSD <i>(option for up to 64GB)</i>		
Expansion Slots	SD card (up to 32GB), Internal Mini-PCIe full size		
OS Support	Windows Embedded Standard 7 <i>(option for WinCE, Windows Professional)</i>		
Environmental			
Temperature	Operating: 0-50°C (32°F-122°F); Storage: -20-60°C (-4°F-140°F)		
Relative Humidity	10 to 90% @ 40°C, non-condensing		
Certifications	CE / FCC Class A, RoHS compliant		

* High Bright Version *(option)*

SPECIFICATIONS FOR SSHI-x UNITS				
Model	SSHI-15	SSHI-17	SSHI-19	SSHI-21
Display				
TFT/LCD Display Size	15"	17"	19"	21.5"
Max. Resolution	1024 x 768	1280 x 1024		1920x1080
Max. Colors	16.7M	16.2M	16.7M	
Luminance (cd/m²)	450 (*1000)	350 (*1000)		250 (*1000)
Viewing Angle (degrees)	160/140	170/160	170/165	178/178
Contrast Ratio	800:1	1000:1		3000:1
Backlight Lifetime Hours	60K (*30K)	30K	50K	30K
Resistive Touchscreen	Type USB, Light Transmission over 80%			
Capacitive Touchscreen	<i>(option)</i> Type USB, Light Transmission over 90%			
Mechanical				
Construction	Aluminium front bezel and chassis, NEMA 4/4X IP66 Front Panel			
Mounting	Panel, VESA 100 x 100			
Dimensions WxHxD mm / in	410 x 310 x 54.6 mm 16.14 x 12.2 x 2.15 in	439 x 348 x 64.8 mm 17.28 x 13.7 x 2.55 in	468 x 380 x 64.8 mm 18.43 x 14.96 x 2.55 in	557 x 362 x 64.8 mm 21.93 x 14.25 x 2.55 in
Cutout Size WxH mm / in	392 x 292 mm 15.43 x 11.5 in	422 x 331 mm 16.61 x 13.03 in	450 x 362 mm 17.72 x 14.25 in	539 x 344 mm 21.22 x 13.54 in
Net Weight	4.4 Kg	6.1 Kg	5.9.8 Kg	7.5 Kg
Power Consumption	29.4W	29.8W	36.4 W	33.3W
Power Input	9~36 V DC, 5 A, 3 pin terminal block; 2 pin power on/off; power supply included			
System				
CPU	Intel 4 th Generation Core i3 <i>(option for i5)</i>			
System Memory	4GB DDR RAM (up to 8GB)			
External I/O Ports	2 x GB Ethernet RJ-45; 2 x USB 3.0 type A, USB4/5, 1 x Audio Out 2 x DB9 Serial Ports (COM1: RS-232/485/422, COM2: RS-232)			
Storage	16GB SSD <i>(option for up to 64GB)</i>			
Expansion Slots	SD card (up to 32GB), Internal Mini-PCIe full size			
OS Support	Windows 7 Professional <i>(option for WinCE, Windows Embedded Standard)</i>			
Environmental				
Temperature	Operating: 0-50°C (32°F-122°F); Storage: -20-60°C (-4°F-140°F)			
Relative Humidity	10 to 90% @ 40°C, non-condensing			
Certifications	CE / FCC Class A, RoHS compliant			

* High Bright Version *(option)*