

# TOPDOC NexGen Programming Software

## Table of Contents

Overview .....	2
TOPDOC NexGen Features .....	3
Application (APP) Editing .....	3
Documentation & Reports .....	4
Properties Editor .....	4
Monitoring/Troubleshooting .....	5
PLC Configuration .....	6
Specifications .....	8
Resources .....	9
Data Sheets .....	9
Manual .....	9
Demo .....	9
Tutorials/Videos .....	9

# Overview

TOPDOC® NexGen is the programming, configuration, documentation and maintenance software for all SoftPLC controllers and Gateways.

TOPDOC NexGen makes SoftPLC® programming and continued maintenance fast and easy. The sleek user interface design means both infrequent and "power" users have the features and functions they need.

## Standard Functions

- Ladder logic program and documentation development - both offline (*local*) and online (*remote*)
- Online SoftPLC monitoring & troubleshooting
- SoftPLC and I/O Driver Configuration
- Logic and data table reports
- XML import/export utilities

TOPDOC, since 1984 and the release of TOPDOC for PLC-2, has been recognized as an advanced PLC program development and documentation software product. The original PLC-3 software sold by Allen-Bradley was a private label version of TOPDOC. Many "industry firsts" have been attributed to the TOPDOC software.

TOPDOC NexGen provides a contemporary and complete set of tools for SoftPLC based systems, and continues the tradition of providing innovative features for PLC users:

- Program logic & documentation are combined into a single file that is downloaded to the SoftPLC controller - no more hassles to keep both sets of files "in-sync" or trying to troubleshoot a system with no documentation
- XML export/import of application files - allows easy auto-generation or re-use of applications
- Program "Clips" for easy re-use of standard logic sequences
- Native character support for other languages than English



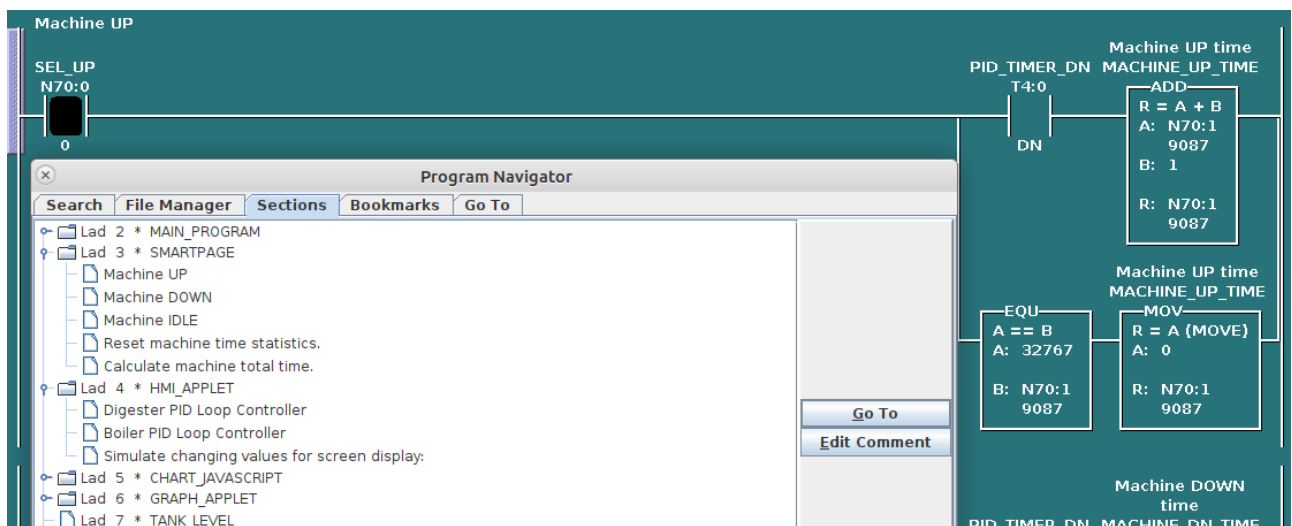
## Multiple APP editors can be opened simultaneously

- Copy/paste rungs between APPs via the clipboard
- Monitor multiple SoftPLC's at the same time
- Attach multiple times to the same SoftPLC to view logic in different areas of the program simultaneously
- View offline and online versions of a program to compare

## Documentation & Reports

SoftPLC APPs can include extensive text documentation, so programs can be easily understood and maintained. All documentation is included in the single APP file (*which includes logic, data table, and all documentation*). This means you have only one file to backup and keep track of!

- Rung comments are virtually unlimited in size. The first line of a rung comment can also become a easily located "subtitle" in a program.

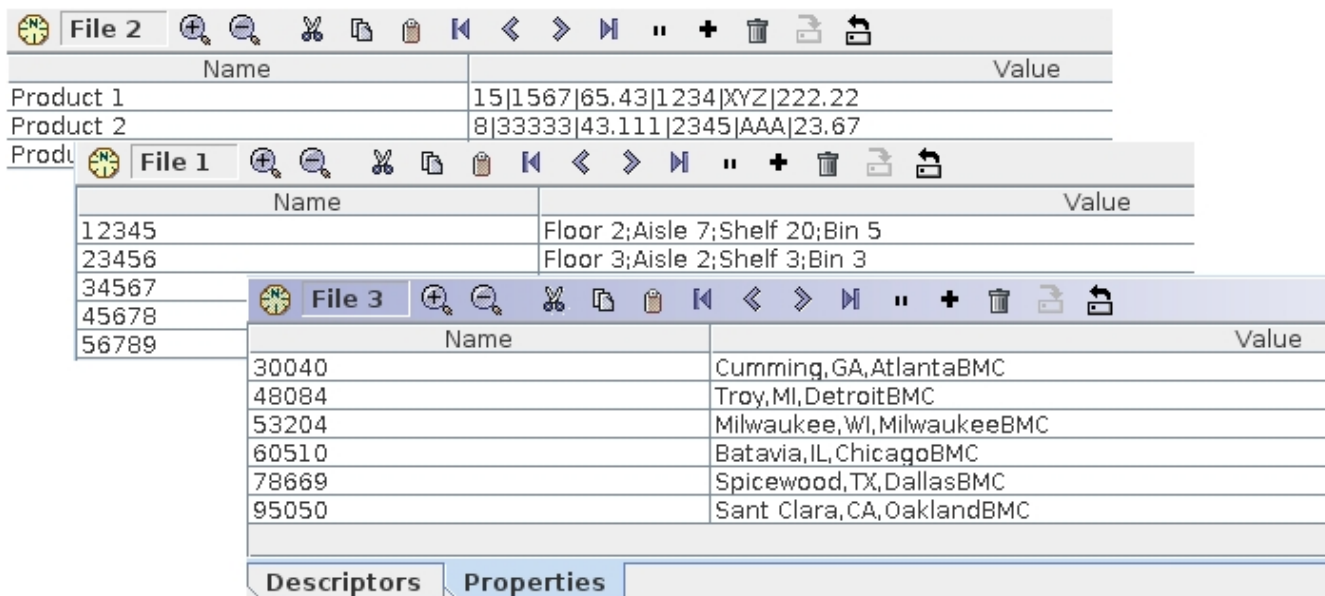


- Subroutines and data table files can be documented with both short and long descriptions.
- Data Table address descriptors include a tagname and a long description. Descriptors are edited in TOPDOC using a spreadsheet style interface, or can be easily created/edited in an external program (*eg: Excel*) and pasted into TOPDOC's editor.

A Ladder Diagram Report and Data Table Report can be printed or saved to PDF format.

## Properties Editor

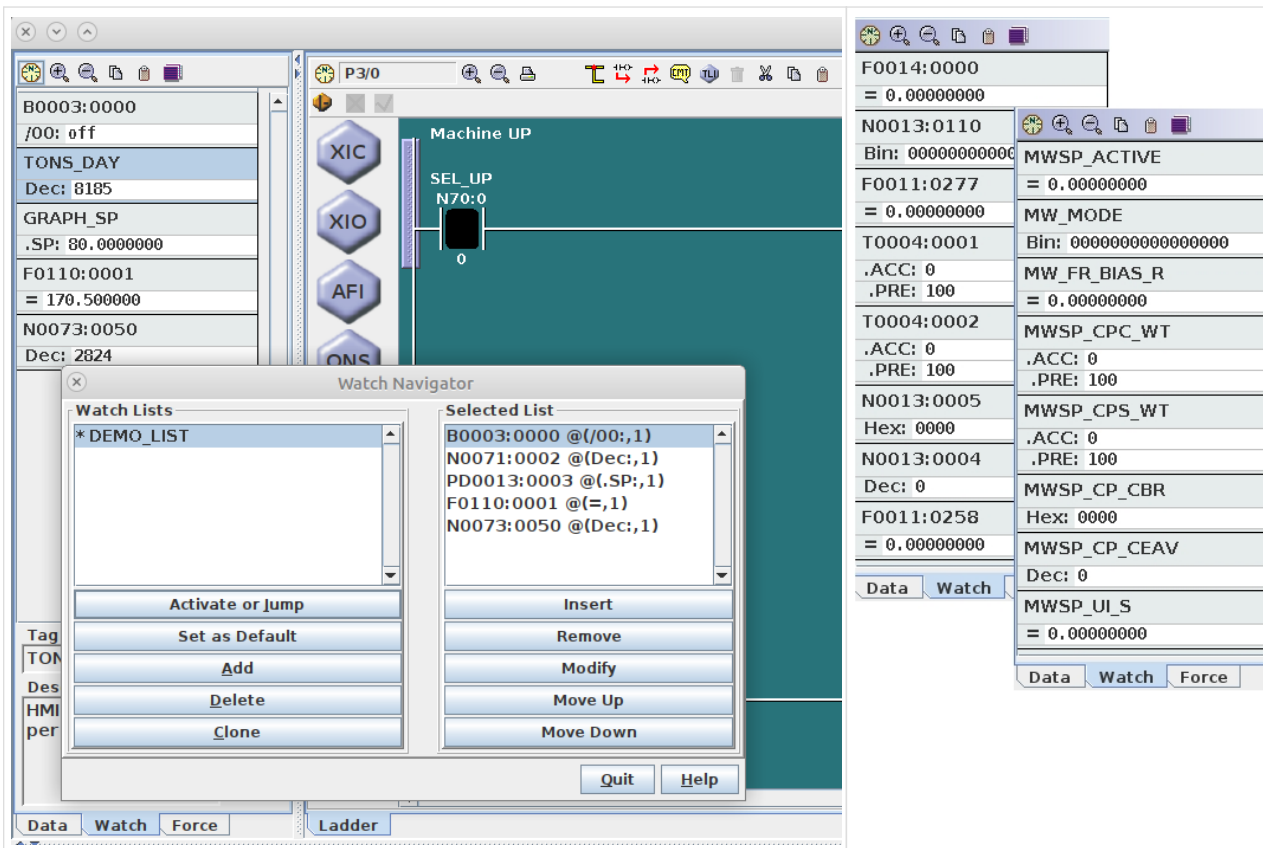
Property Tables are a RAM-resident database in SoftPLC that is useful for applications such as sorting conveyors, warehousing, and recipe-oriented controls. The Properties Editor makes it easy to create and maintain property file entries, using a spreadsheet style user interface. The tables can also be pasted into TOPDOC from an external program, such as Excel.



## Monitoring/Troubleshooting

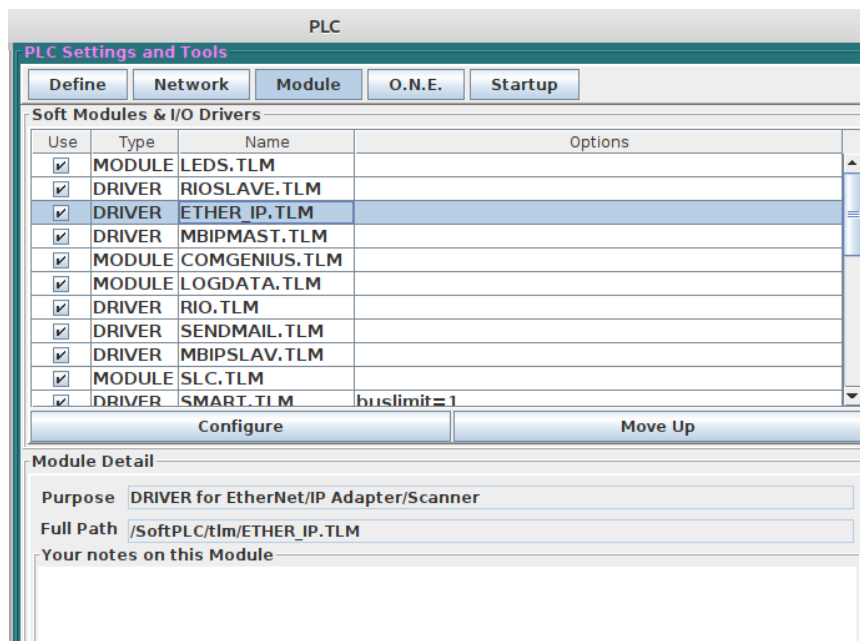
### A number of features are available for SoftPLC system maintenance

- Search by address, tagname, instruction, or instruction/address combination. You can search by direct reference or with wildcard specifications.
- A "Find All" function provides a list of all usages, search results are retained for an easy "trace" function capability.
- Position by rung number, program file number, or comment subtitles
- I/O forcing from ladder or force table editors, including block insert/remove of forces
- Status file monitoring, fault analysis, and other features make it easy to determine causes of problems
- Data table editor provides multiple data formats, "spinners" for easy field state/value editing, and a quick undo function to return to prior value on bit manipulation (*On/Off*)
- Data table "watch windows"- user customizable non-sequential data table editors can be created and stored in the APP

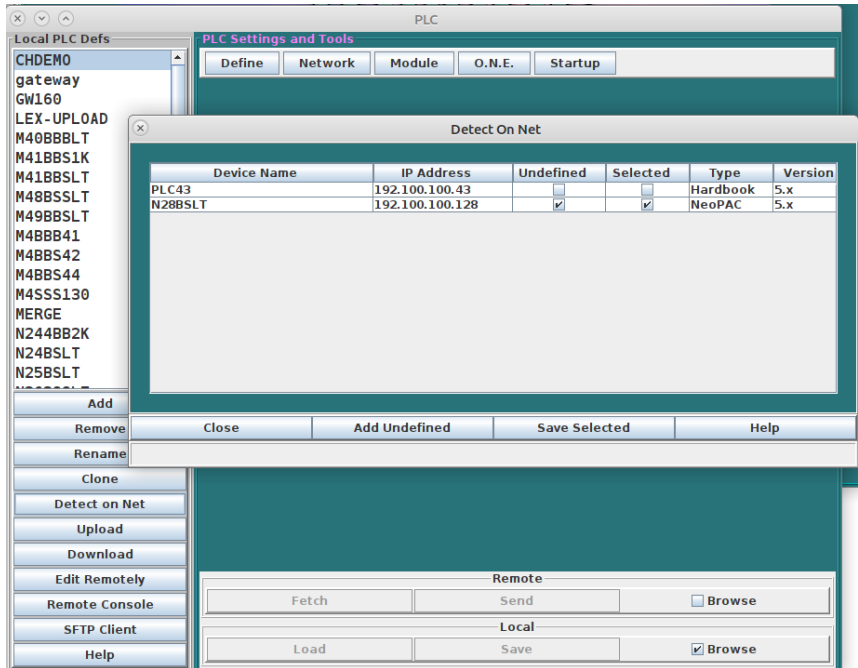


## PLC Configuration

TOPDOC includes a complete SoftPLC configurator which is used to set up TCP/IP and serial communications parameters, select and configure TLM's (*I/O drivers and loadable functions*), set start-up parameters, and more. The PLC Configurator makes it easy to map other vendor's I/O to a SoftPLC system, such as Ethernet/IP, A-B RIO, ModbusTCP, Modbus serial, and others.



A "Detect on Net" function makes it easy to see which SoftPLC's are on the network, and to perform an easy configuration file backup of all PLC's.



# Specifications

TOPDOC NexGen is available for Windows or Linux operating systems.

## System Requirements

- Operating System - 64 bit Windows or Ubuntu Linux
- Minimum Screen Resolution 1024x768
- 150MB free disk space
- Ethernet port (*to connect to SoftPLC/Gateway*)
- USB port (*for software protection key*)



# Resources

## Data Sheets

### [TOPDOC NexGen Data Sheet](#)

TOPDOC NexGen features/functions.

## Manual

### [Smart/NeoPAC SoftPLC & TOPDOC NexGen User Guide](#)

User Guide includes Smart and NeoPAC SoftPLC hardware, and use of TOPDOC NexGen for configuration for firmware version 5 SoftPLC's. It also describes how SoftPLC operates, common troubleshooting techniques, etc. Detailed programming, instruction set, and software use are in the product's online help system.

## Demo

### [TOPDOC NexGen Evaluation/Demo \(ver 5\)](#)

The download is a demo version that allows offline editing without save capability. Ladder programming and detailed product use information are in the product help system. [Contact SoftPLC Sales](#) for the unzip password. *(Note that Windows unzip no longer supports passwords and you will need a 3rd party utility, ie: 7zip.)*

### [TOPDOC NexGen Installation Guide \(v5.0\)](#)

It is **strongly recommended** that you download and use this guide while installing TOPDOC NexGen ver 5.

## Tutorials/Videos

[Intro to TOPDOC NexGen Ladder Editor \(~20 min video\)](#) [Download](#) or [Watch on YouTube](#)

[Intro to SoftPLC Configuration & Online Functions \(~16 min video\)](#) [Download](#) or [Watch on YouTube](#)